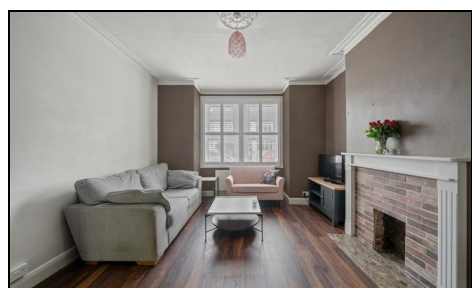


Seaforth Avenue Motspur Park, KT3 6JT

£735,000 Freehold



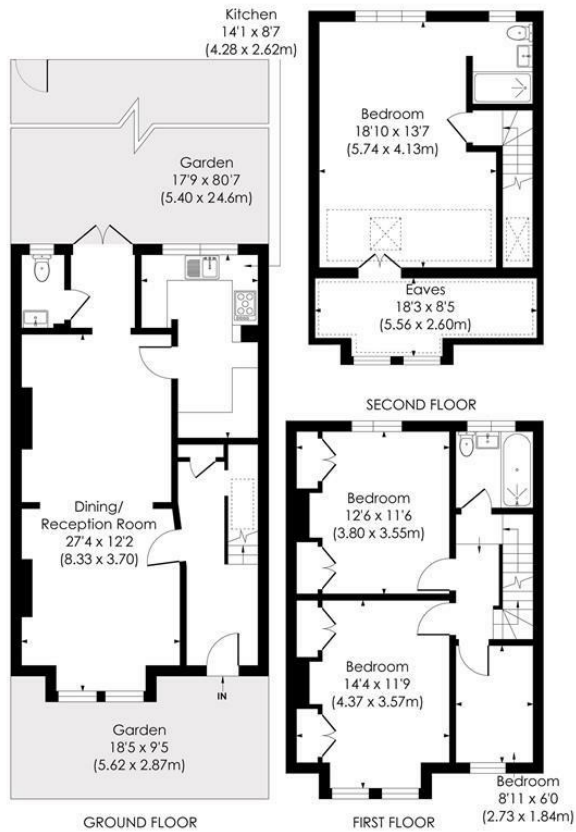
This pretty 1489 sqft FOUR BEDROOM, TWO BATHROOM Edwardian Terrace house has a fantastic principal bedroom with en suite shower room and a superb 80'7 ft West facing rear garden. Located only 0.4 Miles to Motspur Park Station, Shops and the open space of The Sir Joseph Hood Memorial Playing Fields. An excellent first/second time purchase allowing an incoming buyer to move into, finish and extend s.t.p.p to their own desired tastes. There is also a charming entrance hall with stained glass front door and storage, a spacious through lounge, a separate kitchen, a downstairs W.C and modern bathroom on the first floor.

SEAFORTH AVENUE, KT3

Approx. Gross Internal Floor Area

1489 Sq. ft/138.29 Sq. m (Incl RHH)

1304 Sq. ft/121.15 Sq. m (Excl RHH)



pixangle
PROPERTY MARKETING

This floor plan has been prepared for the purpose of illustration only in accordance with the latest RICS code of measuring practice and is not to scale. All measurements and areas are approximate and whilst every effort has been made to ensure the accuracy of the plan contained here, no responsibility is taken for any error, omission or misstatement.

- 1489 sqft - Four Bedroom - Two Bathroom
- Attractive Edwardian Terrace House
- Spacious Principal Bedroom With En Suite
- 80'7 ft West Facing Garden
- 0.4 Miles To Motspur Park Station And Shops
- Downstairs W. C
- Potential To Further Extend S.T.P.P
- Ideal First/Second Time Purchase
- EPC - C
- Council Tax Band - D



Energy Efficiency Rating		
	Current	Potential
Very energy efficient - lower running costs		
A (85-91)		
B (81-84)		
C (69-80)		
D (55-68)		
E (39-54)		
F (21-38)		
G (1-20)		
Not energy efficient - higher running costs		
England & Wales		

For Free Mortgage Quote and Best Mortgage Rates, call Ellisons Mortgage Advisor on 0208 944 9595



Although these particulars are believed to be correct, their accuracy is not guaranteed and they do not form part of any contract.

Celebrating 30 years
of successful Sales and
Lettings in Merton

